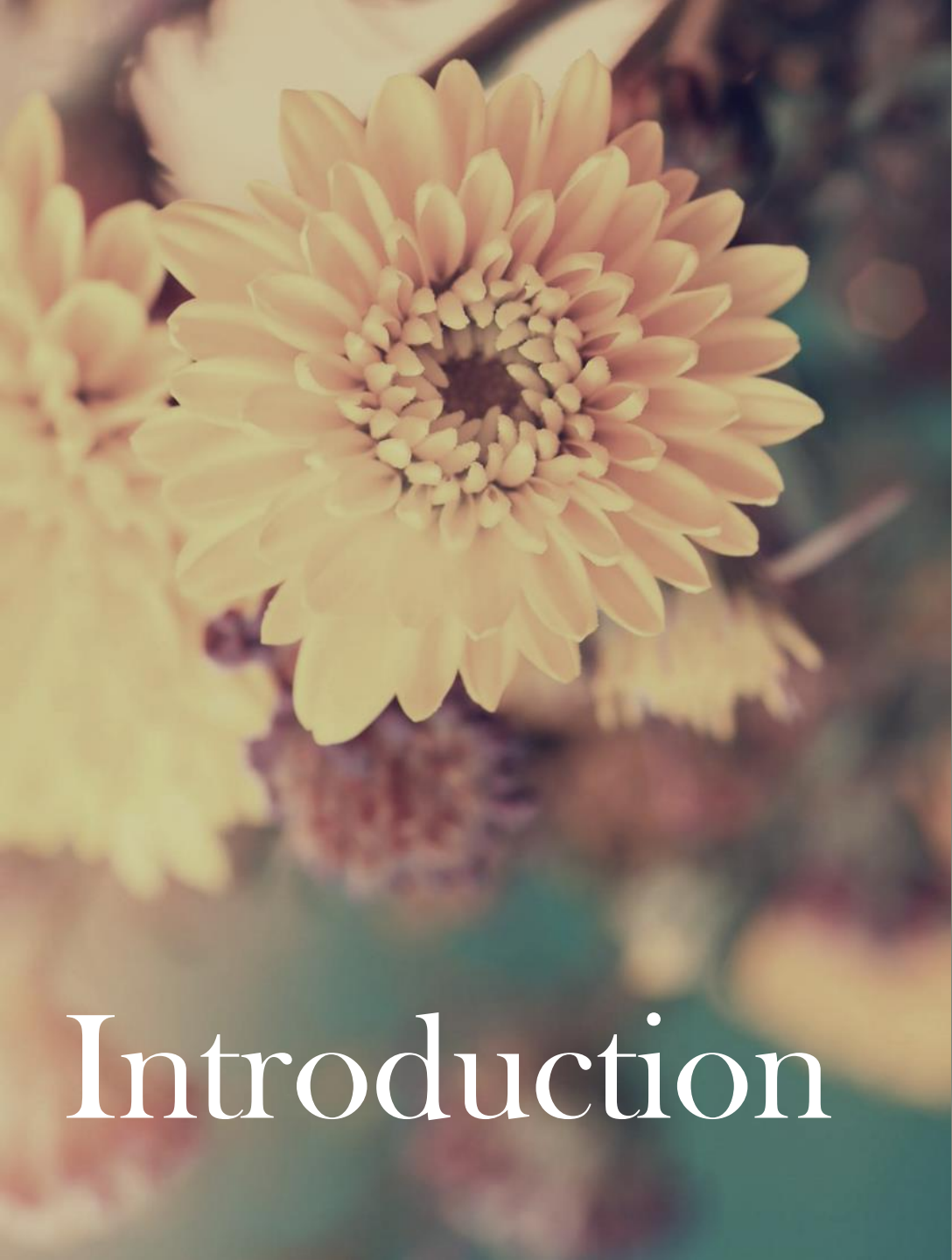


30Yrs_15 WomXn

Journeys of Academic Leaders at UJ awards project





Introduction

The FADA Jewellery Design and Manufacture 3rd year students have created Jewellery pieces that honour and celebrate womxn leaders in academia. This year, the project reflected on the last 30 years and drew inspiration from significant moments in the lives of our nominees. We applaud the strength, tenacity, and sacrifices it takes to rise to the top and stay there. Using narrative Jewellery as a means of expression, we hope to have highlighted the qualities of our womxn leaders and to have inspired our students and emerging academics to reach greater heights.



The Brief

Each jewellery piece is a bespoke creation in Sterling Silver and possibly includes semi-precious gemstones which assist in celebrating the stories of the respective nominees.

To this end, our students set out on a journey over the past few months of engaging in a design and manufacture process with their nominees.





The Awards



Prof Annah Moteetee

Executive Dean • Faculty of Science



“These earrings are inspired by the leaf of the wormwood plant which stirs fond childhood memories for my client.”

Designed by:
Riley Coltman

*From Roots to Blooms: The Journey from
Childhood to Success*





Prof Sarah Gravett

Deputy Vice Chancellor • Research and Internationalisation (Acting)



“This ring was designed to honor and celebrate the journey of Prof Sarah Gravett, it is set with four nectarine coloured agate cabochon cut gemstones.”

Designed by:
Bhomela Jordan

Becoming





Ms Nolwazi Mamorare

Chief Financial Officer

“A timeless expression of elegance and simplicity, intertwining Christian symbolism with refined design.”



Designed by:
Zodwa Sovasi

Divine Serenity





Prof Maria Frahm-Arp


Executive Director • Library and Information Centre



“Inspiration was taken from the essence of nurturing, growth and unity to design each element of this chain necklace. These elements strongly resonate with my clients caring nature and urge to see others succeed and flourish.”

Designed by:
Thato Moloto

Nurture-link: a chain of life, growth and connection





Prof Kammila Naidoo

Executive Dean • Faculty of Humanities



“Inspired by the butterfly and the bow tie, this pendant necklace captures both sophistication and the gracefulness of nature.”

Designed by:
Malesela Mathekga

Butterfly Bow





Ms Lerato Riba

Executive Director • Financial Governance and Revenue

“These earrings are an ode to Ms Lerato Riba’s charismatic personality and charm”



Designed by:
Mpilo Nkonde

Riba's Charm





Dr Ndivhuwo Luruli

Executive Director • Research and Innovation

“Bringing the simple beauty of flowers into an elegant jewellery pendant.”



Designed by:
Martin Modau

Garden Grace





Prof Puseletso Letete

Vice Dean • APK Law Dean's Office



“These earrings are a timeless blend of classic elegance, South African heritage and modern sophistication.”

Designed by:

Aneliswa Mbonambi

Heritage Harmony Earrings





Ms Tokoza Kwinana

Executive Director • Human Capital Management



“Inspired by the transformative power of faith and personal growth, these earrings symbolize the continuous journey of victories, celebrating both individual strength and the collective spirit of empowerment.”

Designed by:

Gopolang Segoe

Rising Beyond: A Journey of Faith and Triumph





Prof Bettine Jansen van Vuuren

Registrar



“This unique and powerful jewellery piece is inspired by the sable and the sub-Antarctic island which are both close to my client's heart.”

Designed by:
Johan van Heerden

Icy Ridge





Prof Sehaam Khan

Deputy Vice-Chancellor (Academic)



“Inspired by the timeless classic ‘To Kill a Mockingbird’ these earrings elegantly capture the essence of literature with a book-shaped charm and a feather bookmark, celebrating the beauty of reading and the magic of storytelling.”

Designed by:
Bongiwe Ngondo

Mockingbird's Bookmark





Prof Nadine Petersen

Executive Dean • SWC Education Dean's Office

Accepted on her behalf by Ms Jackie Batchelor

“Inspired by the lavender plant, this ring captures both the colour and motif of the lavender flower set in an elegant split shank ring.”



Designed by:

Tavonga Chikwenya

Fields of Lavender





Prof Mmasethunya Temane

Acting Executive Dean Of Faculty Of Health Science

“A symbol of strength, discovery and growth.”



Designed by:
Sipho Mbatha

New Awakenings and Beginnings





Ms Nomsa Mahlangu

Senior Director • APK UJ Sport



“The union of the green agate gemstones and the chains pattern resembles growth, which are symbolic of Prof Nomsa Mahlangu journey to success.”

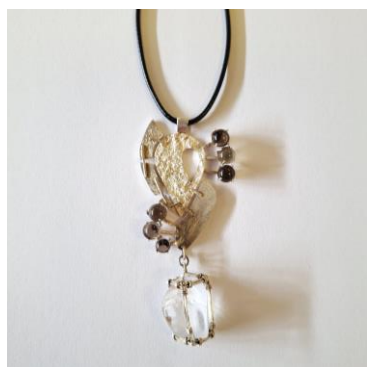
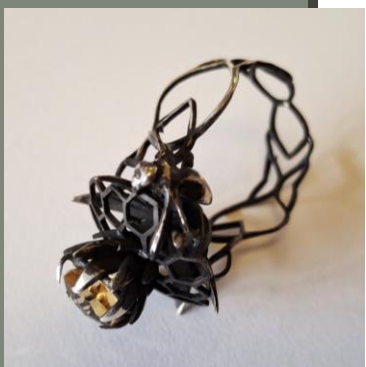
Designed by:

Lethabo Mabitsela

A Budding Succession



Silent Auction



Thank You

